

WEITRUCK

APPLICATION CONFIGURATION

APPLICATION_CONFIGURATION_01.04_11.01_EN

INDEX

1. EXAMPLE OF WEITRUCK SYSTEM	3
2. MINIMUM REQUIREMENTS ON THE PC	3
3. MINIMUM REQUIREMENTS ON THE INDICATOR	3
4. INSTALLATION OF THE WEITRUCK SOFTWARE.....	4
5. CONFIGURATION OF THE SOFTWARE.....	4
6. CONFIGURATION SCREEN	7
6.1 LANGUAGE/KEYPADKEYBOARD CONFIGURATION	7
6.1.1 CONFIGURATION OF THE QUICK CHOICE KEYS	8
6.2 ENABLE/DISABLE KEYS.....	9
6.3 CREATION OF NEW GROUPS / USERS	9
6.3.1 CREATION OF NEW GROUPS.....	10
6.3.2 CREATION OF NEW USERS	11
6.4 “DEMO” FUNCTIONING MODE	12
6.5 CONFIGURATION OF OPERATING MODE.....	13
6.6 CONFIGURATION OF THE BADGE READER.....	14
6.6.1 FUNCTIONING MODE WITH THE BADGE.....	16
6.7 CONFIGURATION OF THE CHIP CARD READER.....	17
6.7.1 FUNCTIONING MODE WITH THE CHIP CARD.....	18
6.8 REPEATER CONFIGURATION	18
6.9 CONFIGURATION OF LOGIN/LOGOUT PARAMETERS	19
6.10 EXPORTING OF WEIGHS	20
6.11 WEITRUCK DATABASE STORAGE	21
6.11.1 MODIFICATION OF WEITRUCK DATABASE	21
6.11.2 CANCELLATION OF WEITRUCK DATABASE.....	21
6.11.3 RESTORING A WEITRUCK DATABASE.....	21
6.12 PRINTER CONFIGURATION	22
6.13 LOGO CONFIGURATION	23
6.14 INPUT/OUTPUT CONFIGURATION	24
6.14.1 INPUTS CONFIGURATION	24
6.14.2 OUTPUTS CONFIGURATION	25

1. EXAMPLE OF WEITRUCK SYSTEM



2. MINIMUM REQUIREMENTS ON THE PC

- Microsoft Windows XP Professional Service Pack 2
- Pentium 3 CPU 1 GHz or greater
- 512MB RAM
- At least 30MB of free space on the disk
- Minimum display resolution of 800x600 (minimum 65536 colours)
- Presence of Microsoft .NET Framework 2.0 (freely downloadable from the Dini Argeo web site)
- Install the eventual printer connected to the equipment
- Install any other tool necessary for the application (for example RF Tool and the radio drivers)

3. MINIMUM REQUIREMENTS ON THE INDICATOR

- The indicator must be fitted of the appropriate ALIBI Memory in order to use the WEITRUCK
- The minimum software versions which must be loaded in the indicator are the following:

<i>Indicator</i>	<i>Minimum version</i>
DFW	03.00.04
DGT / DGTQ / DGT60	05.06.01

In the set-up environment of the indicator, the following must be configured:

- **F.ModE >> FunCt. >> Alibi**
- **SEtuP >> SEriAL >> CoM.PC >> PCModE >> 485**

and enter the value of the 485 address.

4. INSTALLATION OF THE WEITRUCK SOFTWARE

- In order to install the WEITRUCK in the system, launch the executable of the installation and follow the suggested steps.

NOTE: If there already is a WEITRUCK version previous to the one that one wants to install, it is necessary to uninstall the previous version:

- Click on the **START** menu of Windows, choose **All the programmes >> Weitruck**, and then **Uninstall**, or click on the Windows **START, Resources of the computer >> installation of applications >> Weitruck**, then **Uninstall**. Follow the suggested steps.
 - In the old installation folder, in any case, the modified print formats will remain as well as the companies/materials/vehicles databases saved during the last use of the programme, so that these can be used by the new version.
- To launch the programme one should:
 - Click on the connection automatically created on the Desktop, or:
 - Choose in the Windows **START** menu, **All the programmes >> Weitruck >> Weitruck**.

5. CONFIGURATION OF THE SOFTWARE

When the software is launched, the User name and Password are request:



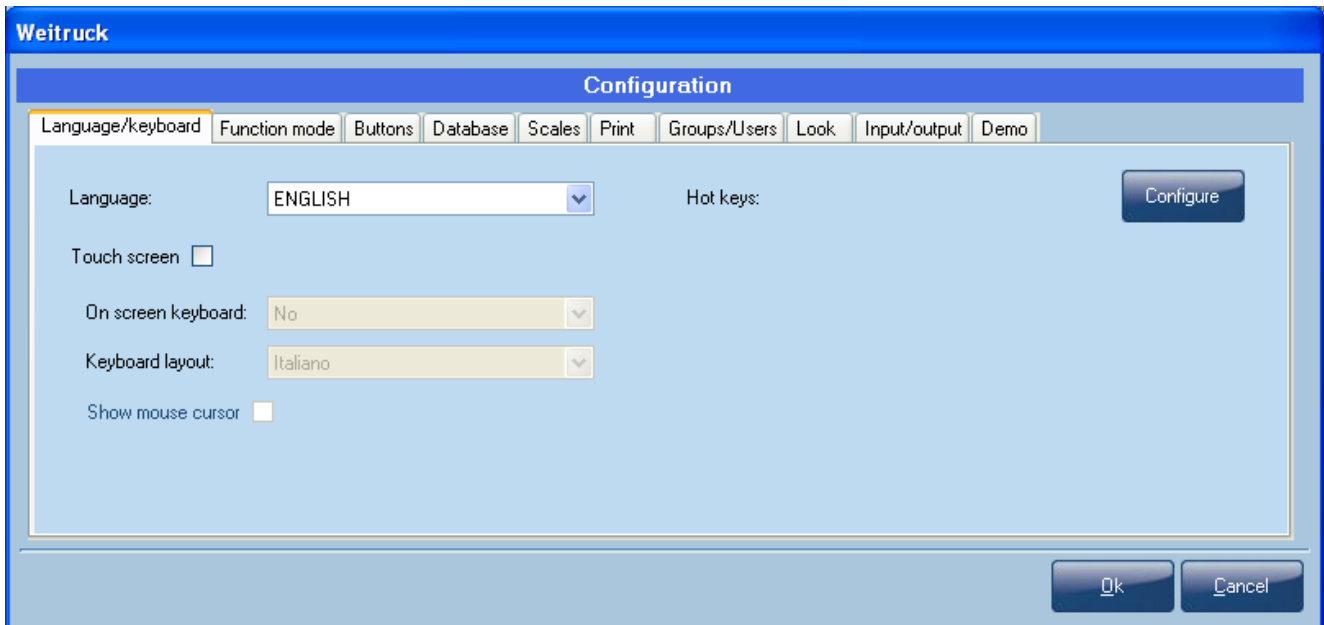
User name: admin

Password: (the default password is empty)

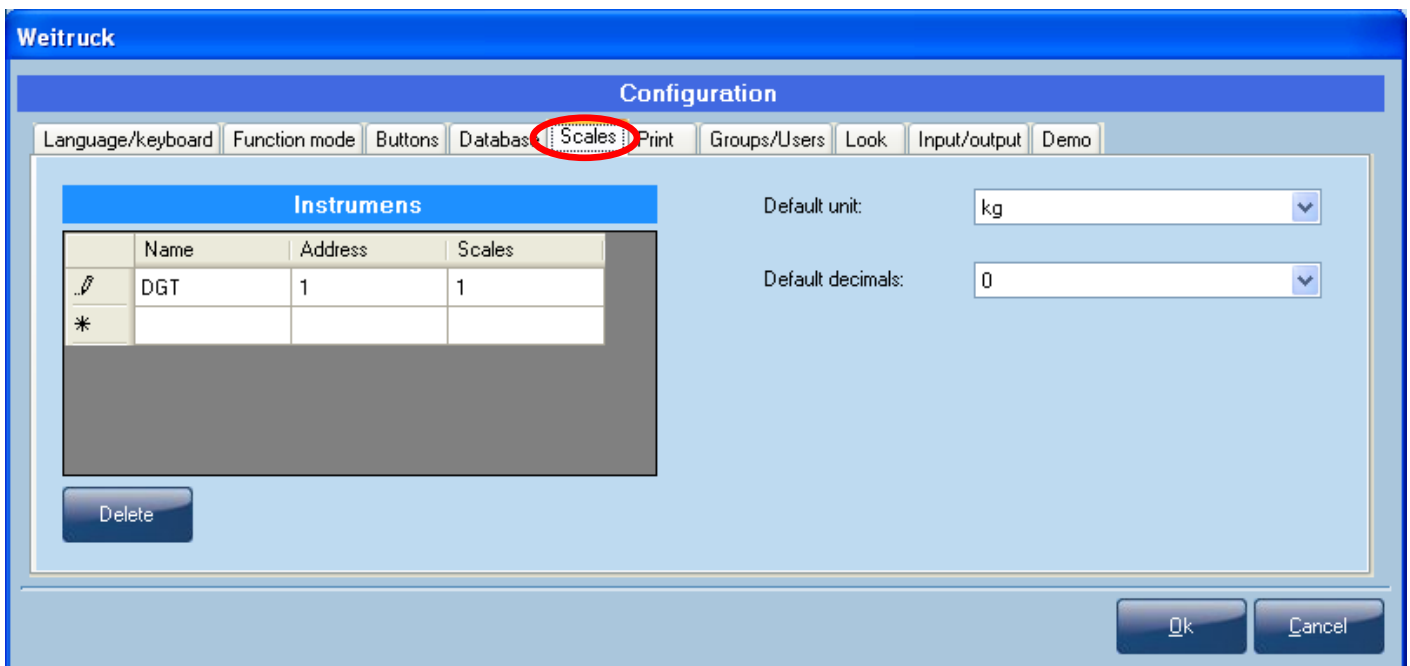
At the first launch of the software, the following message will appear:



By clicking on **OK** the Configuration window will appear.

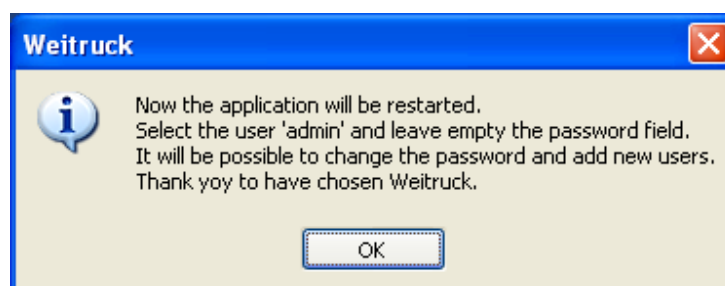


Select the **Scales** item



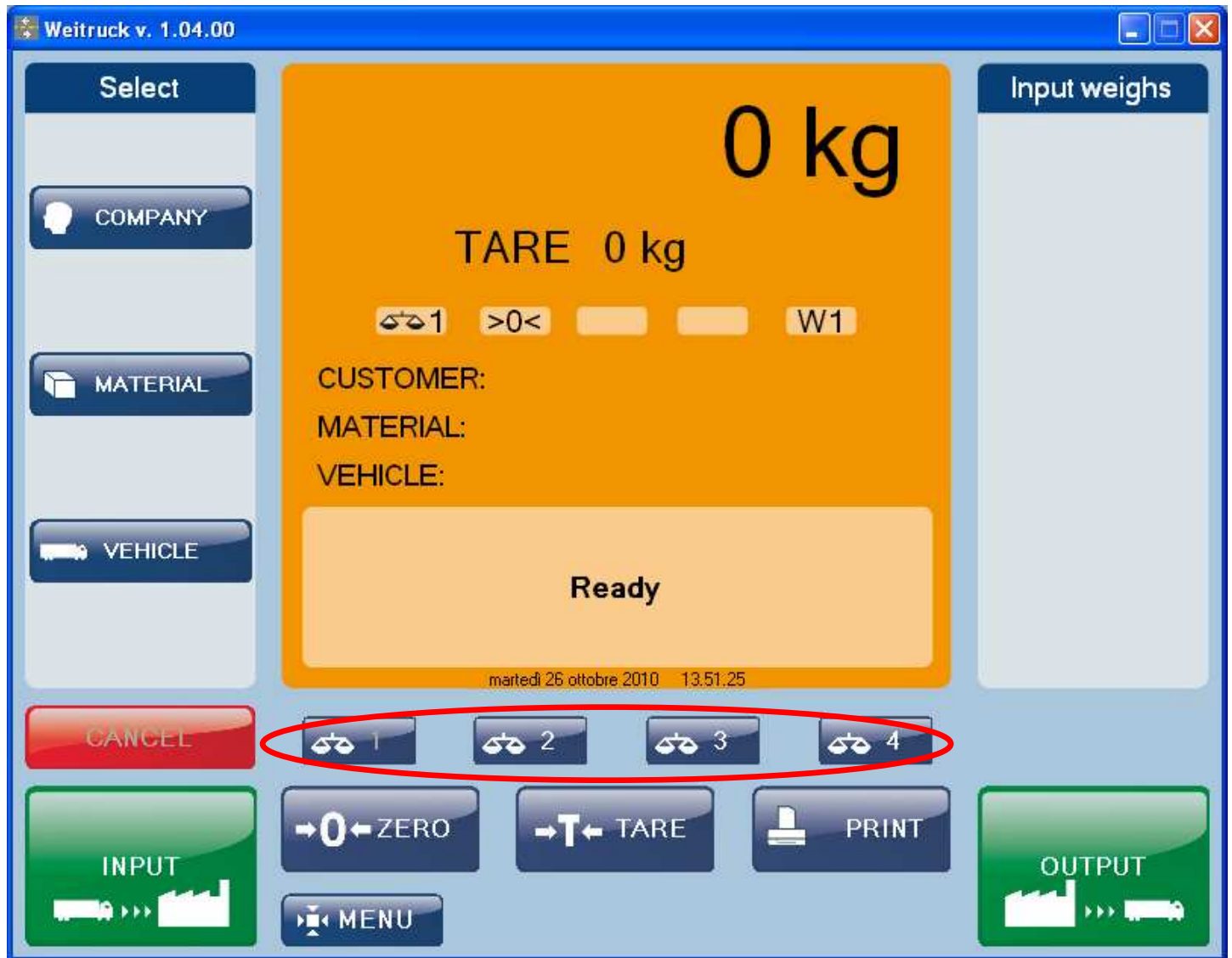
In this window it's possible to set the name, the 485 address of the indicator (**Address** field) and the number of Scales connected to each indicator (**Scales** field). It's also possible to select the scale's unit of measure and decimals.

At the end of the entry, confirm with the OK key and exit the Configuration menu.
The following window will appear:



Confirm with the OK key in order to restart the application.

The number of configured scales is visible in the main screen;

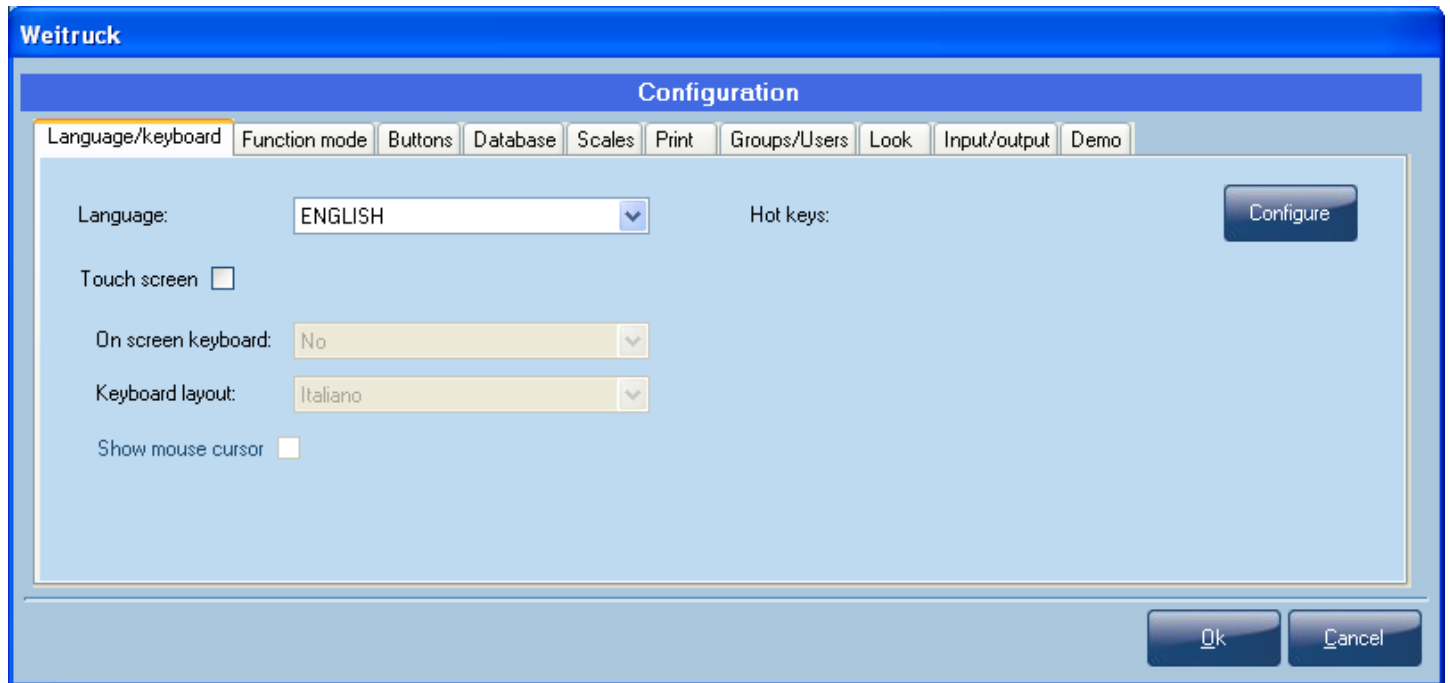


If one or more scales are disconnected, it will not be possible to select these any more.

6. CONFIGURATION SCREEN

The configuration screen which opens when the programme is initially executed is recallable in any moment by pressing **MENU** in the main screen and by choosing “**Configuration**”.

6.1 LANGUAGE/KEYBOARD CONFIGURATION



Language: it's possible to choose the language with which the WEITRUCK is executed. By default it's the one set during the installation. The change of the language involves the restart of the application.

Touch screen: if active, it enables the touch-screen mode

Keypad on the screen: if one is using the Touch screen mode, it's possible to enable the automatic visualisation of the keypad on the screen.

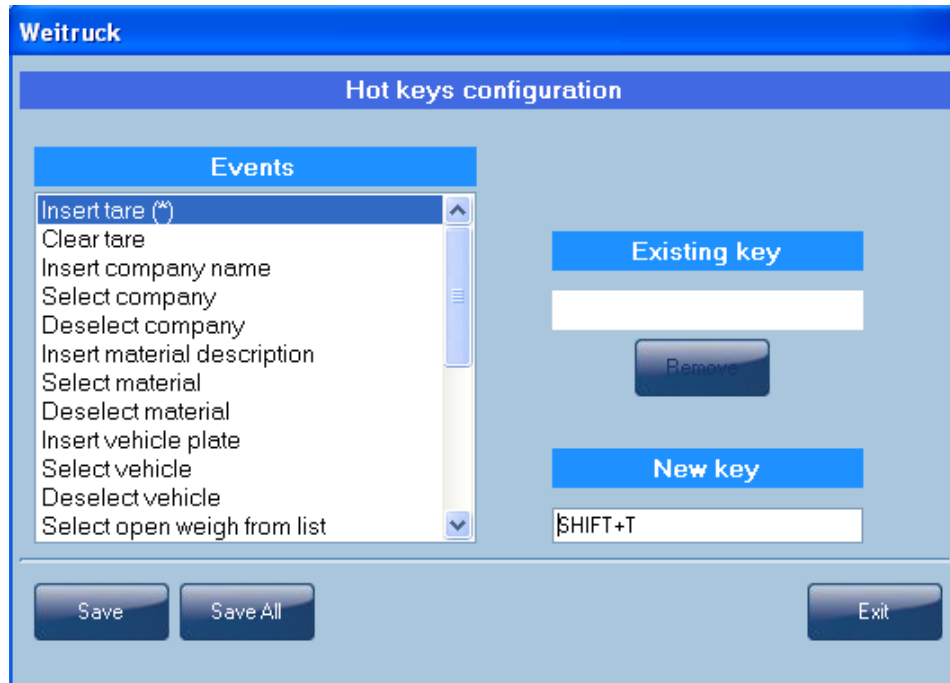
Keypad layout: if one is using the Touch screen mode, it's possible to change the keypad layout in the various languages. The change of the keypad layout involves the restart of the application.

Shows mouse cursor: if one is using the Touch screen mode, it's possible to view the mouse cursor on the screen.

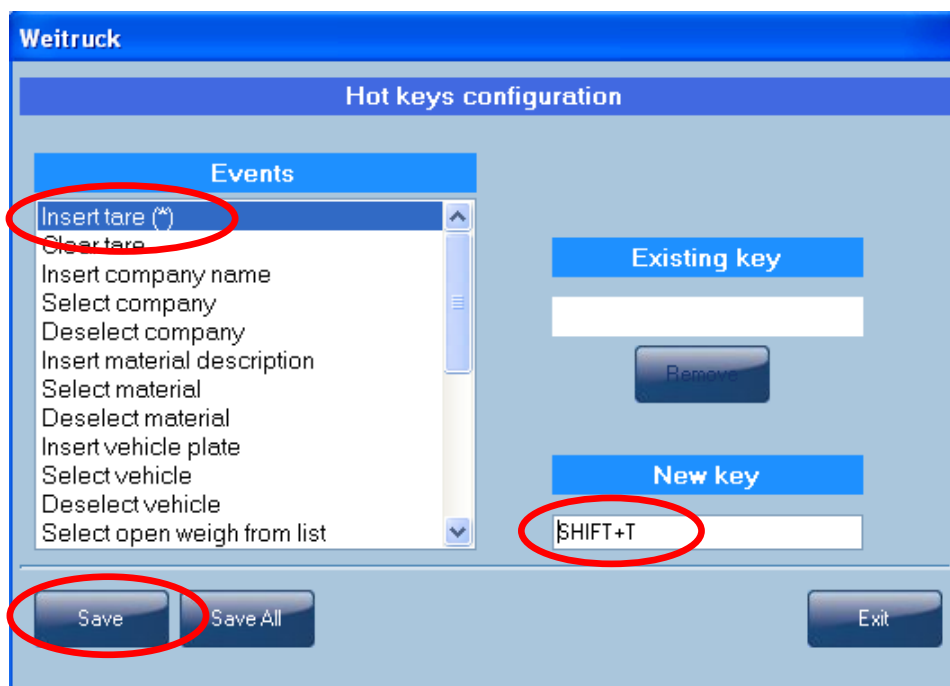
6.1.1 CONFIGURATION OF THE QUICK CHOICE KEYS

With a PC keyboard, it's possible to link a key (or a combination of keys) to a specific event of the programme so that the pressing of the key quickly recalls the linked event.

- Find the “**Hot keys**” item and click on configure



- In the “**Events**” screen which opens, choose an event, for example “**Insert Tare**” and under “**New key**” enter the key (or the combination of keys) which must recall the linked event. The event which is being modified will be highlighted with an asterisk between the parentheses.
- In the “**Existing key**” field one views the key (or the combination of keys) already linked to the highlighted function.
- Press the “**Save**” key (or “**Save all**” in case the modified configurations are more than one).

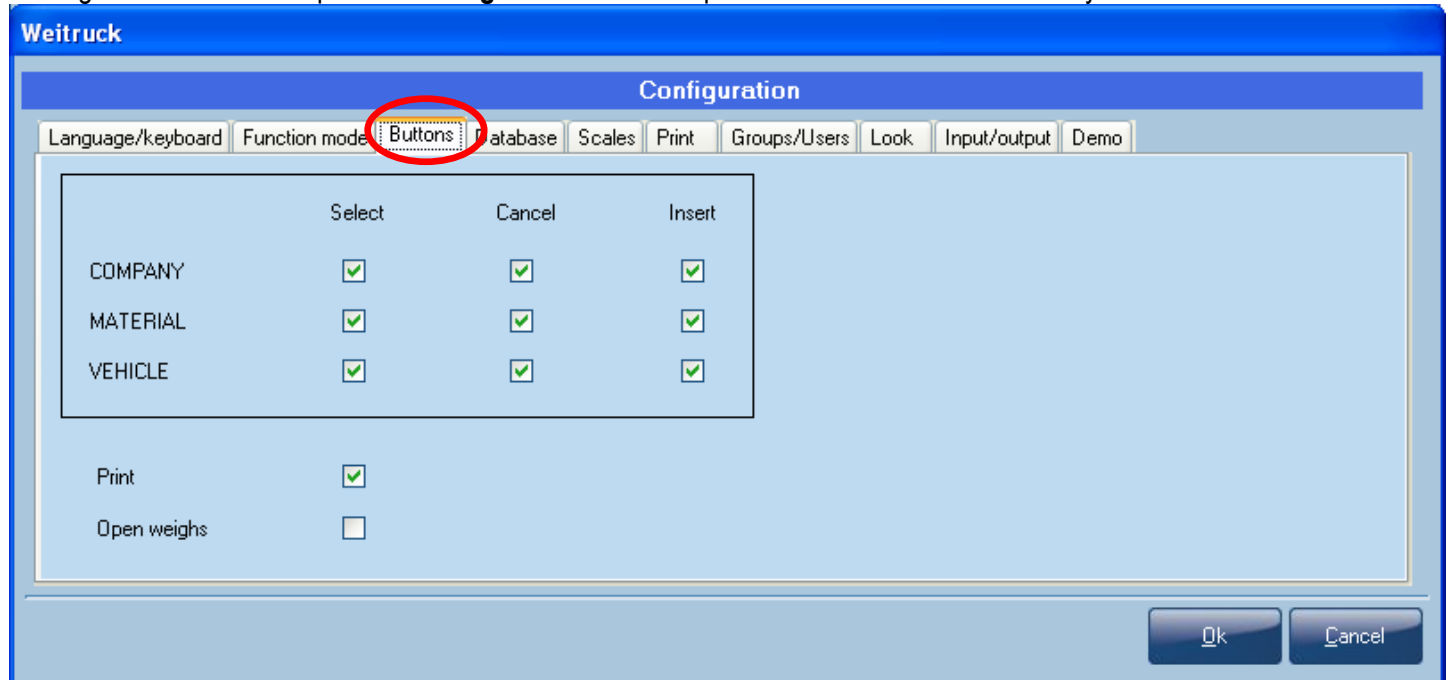


- At the end, press “**Exit**” and exit also from the configuration screen. One will be asked to restart the application.

At the following execution, in the above example, the combination of the SHIFT+T keys on the PC keyboard, will have the same effect as pressing the “→T← TARE” key in the main screen.

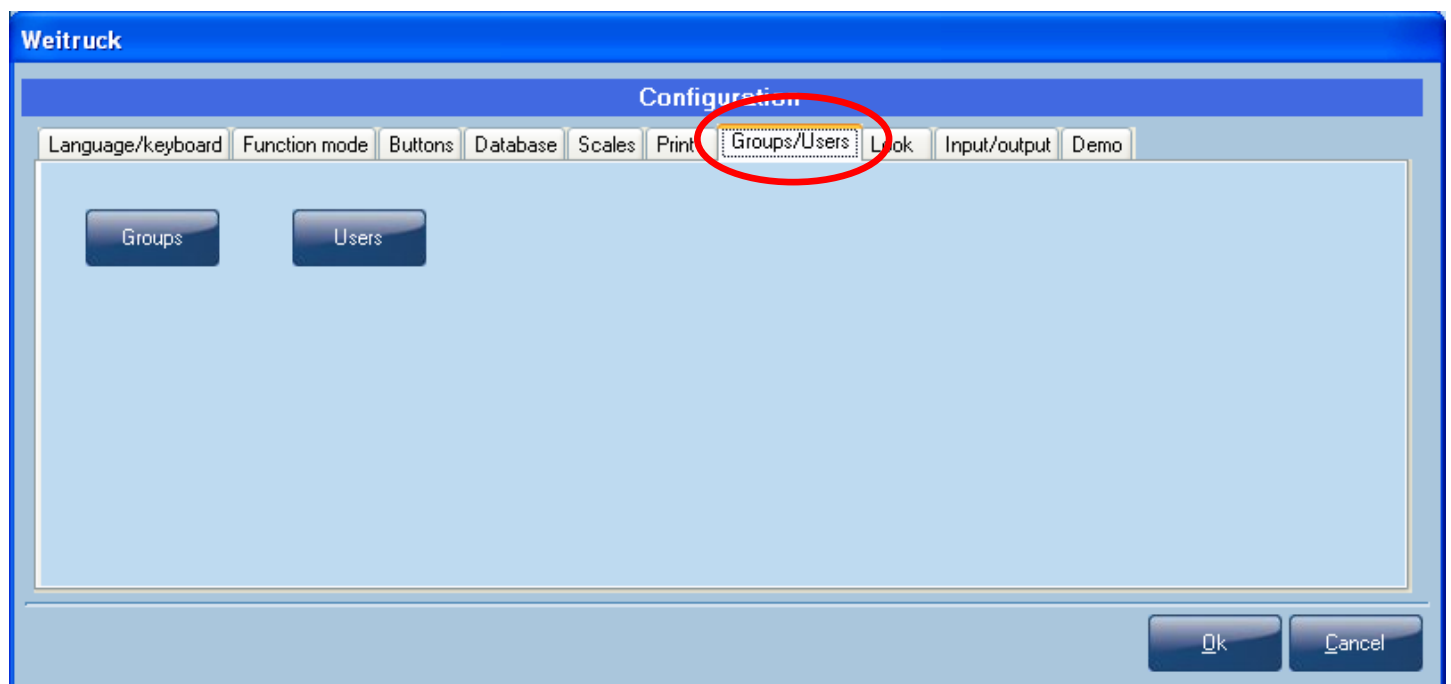
6.2 ENABLE/DISABLE KEYS

Through the “Buttons” step of the Configuration menu it’s possible to enable/disable the keys in the main screen



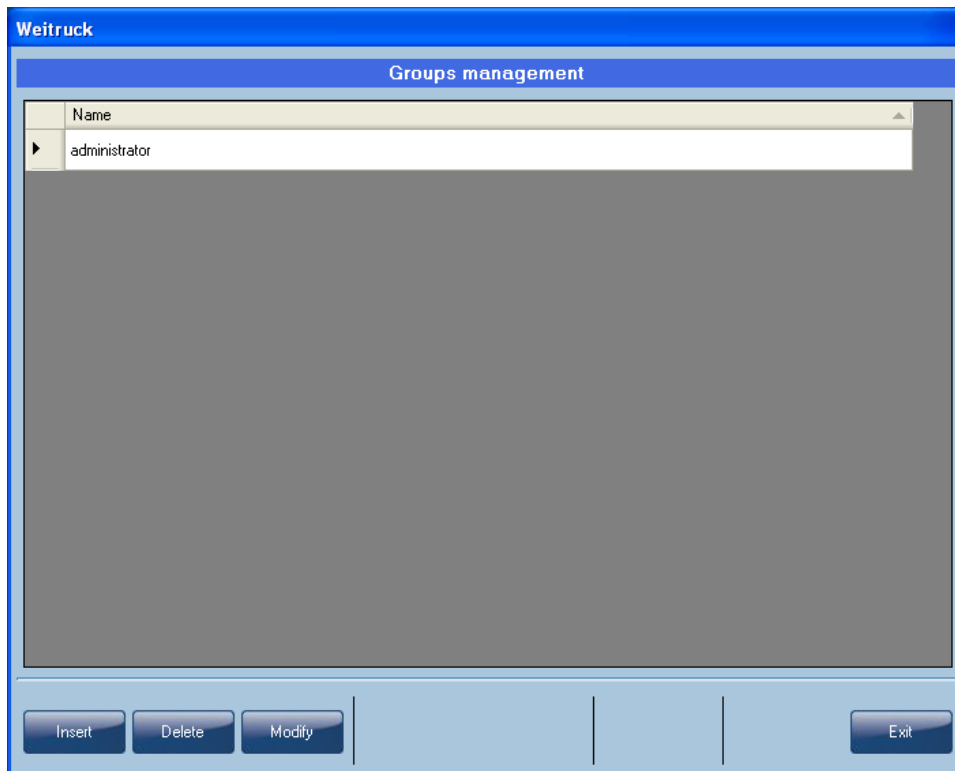
6.3 CREATION OF NEW GROUPS / USERS

- Select the Groups/Users item from the configuration menu



6.3.1 CREATION OF NEW GROUPS

- Select “**Groups**” and press on “**Ok**”.
- The following screen will appear:



- It's possible to select “**Enter**”, “**Cancel**”, “**Modify**” to enter, cancel, and modify a group of users in the proposed list.

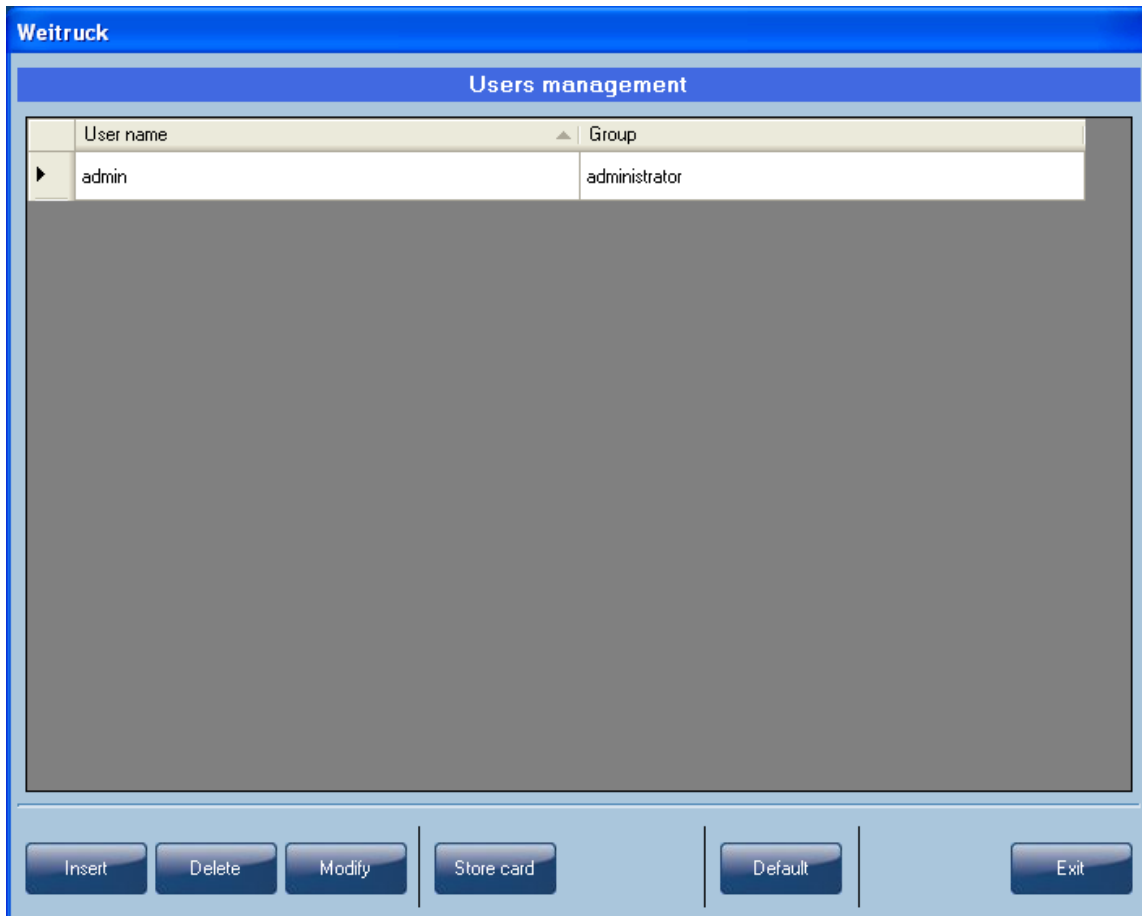
With each group it's possible to assign the limitations on the operations allowed within the software. The entry/modification screen will appear like this:



One should just check off the items relative to the rights allowed to the group and leave in white all the others. At the end, click on “**Ok**”.

6.3.2 CREATION OF NEW USERS

- In the “**Groups/Users**” menu, select “**Users**” and click on “**Ok**”.
- The following screen will appear:

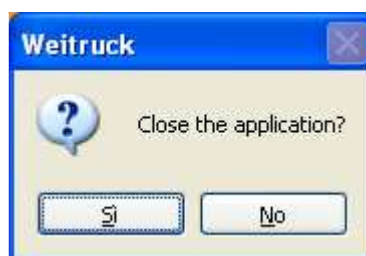


The “**Enter**”, “**Cancel**”, and “**Modify**” keys can be used to enter, cancel, and modify a new user and its linking to an already existing group.

By clicking on “**Store card**” it’s possible to store the user in the Smart Card.

By clicking on “**Default**” instead, it’s possible to set the selected user as a default user: at the following start of the application one accesses with this identity without the need of entering the user name and password.

Note: if a default user has been configured, it will in any case be possible to access the other users by clicking on “**No**” when one is asked to close the application



Then, the login screen will appear

The entry/modification screen will appear in this way:

Inside, it's possible to enter the name with which the user must identify himself in the "USER:" field and the password to be entered in the "PASSW:" field (to be entered twice for confirmation). Therefore it's necessary to specify the affiliation group (and therefore the rights which it has), while, by clicking the **Enable Badge** item in the **Badge:** field, the contents of the read badge are drawn by swiping it through the slot.

At this point close the programme by selecting MENU >> Exit or by closing the main screen.

The new identification shell will be proposed: by entering the correct USER: and PASSW: it will be possible to access to the WEITRUCK with the new identity.

6.4 "DEMO" FUNCTIONING MODE

It's possible to use the WEITRUCK simulating the presence of the weight also without having a scale physically connected.

To do this, Select the **Demo** item and click on it

Click on **Ok**.

At this point:

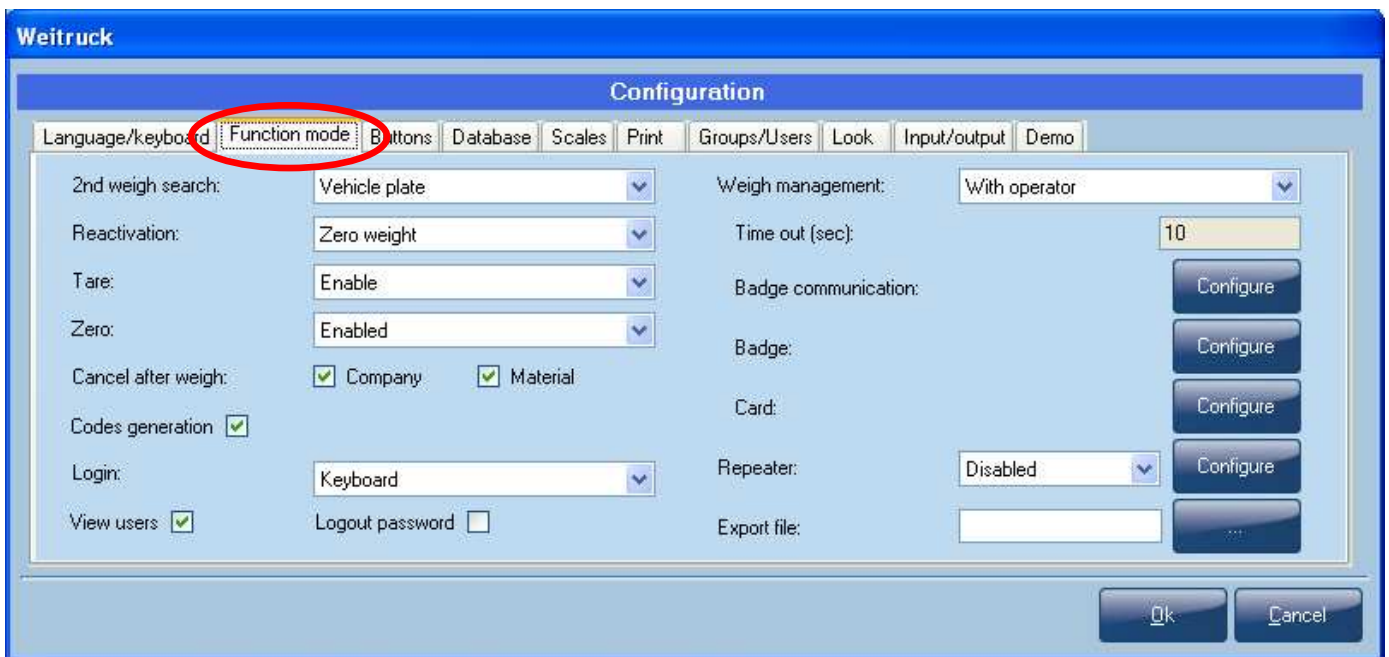
- The pressing of the left key of the mouse allows advancing in the 1000's.
- By moving the little wheel on the mouse one can increase/decrease the value of the weight in the 100's.
 - This value is freely modifiable: to do this, move the mouse arrow on the weight value in the main screen, keeping the left key pressed and moving the little mouse wheel: one can change with the values 1,10,100,1000,10000 (**demo increment = X** is displayed).
- To quickly clear the weight value: move the mouse arrow on the weight value in the main screen and click on the right key of the mouse.
- To quickly pass to the value 60000: move the mouse arrow on the weight value in the main screen and press on the wheel.

It's possible to carry out any type of weigh in input, output, or as a single weigh.

6.5 CONFIGURATION OF OPERATING MODE

To configure the weighing parameters:

- Select the **Function mode** item.



The parameters have the following meaning:

2nd weigh search: Sets the ID mode of the input weighs, in the "Inputs List": by indicating the tare of the vehicle which has been weighed in input, or through a progressive code linked to each input weigh. The mode change involves the restart of the application.

Reactivation: it's possible to set whether to enable the printing and the in/out weigh after a passage by zero of the weight, or a weight instability, or always.

Tare: allows enabling or disabling the tare. If it's disabled, the contents of the "Tare" field in the vehicle databases will not be taken into consideration, nor is the TARE key accessible in the main WEITRUCK screen. The mode change involves the restart of the application.

Zero: allows to enable or disable the zero function. If it's disabled, one does not view the **TARE** key in the main screen. The mode change causes the restart of the application.

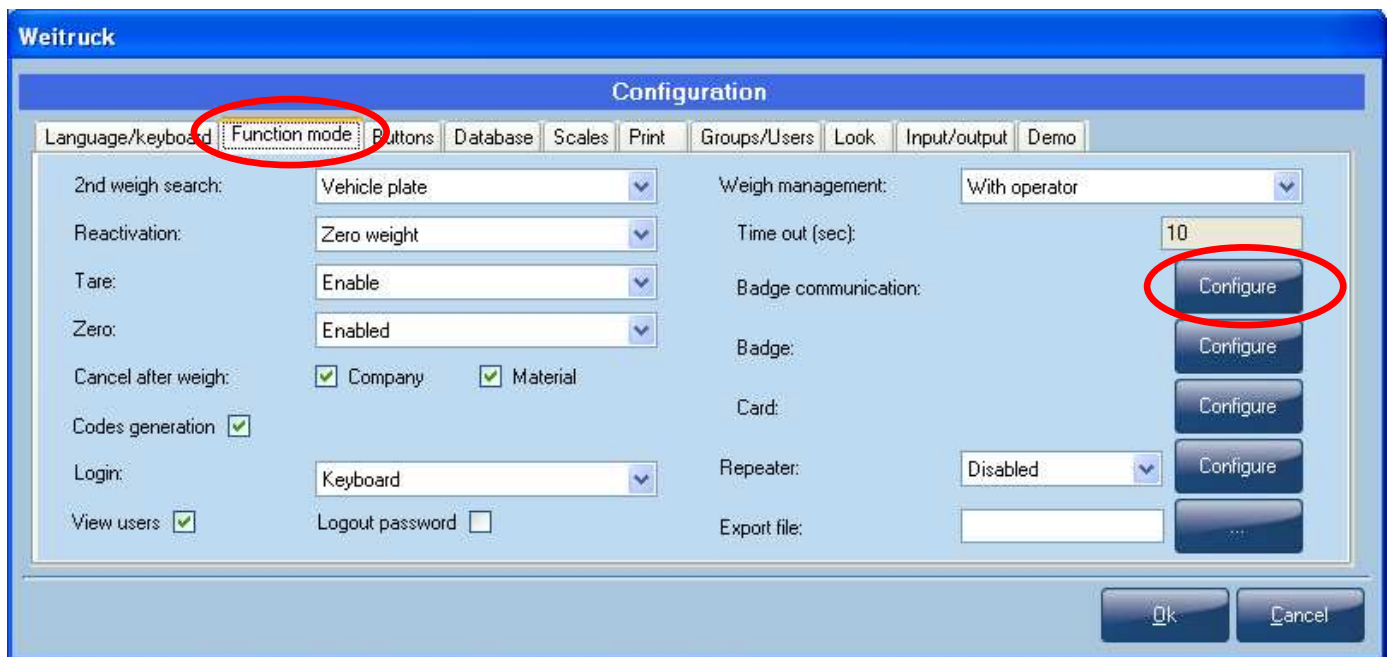
Cancel after weigh: allows to enable or disable the automatic cancellation of the company and/or material once a weighing is done.

If the **Company** and/or **Material** items are not clicked, once a weighing has been made, the **Customer/Supplier** and/or **Material** items will remain active in the screen. It will be possible to cancel only through the **CANCEL** button in the main screen

Code generation: if enabled, it automatically generates the code in the databases (for example: CLI1, CLI2, CLI3, etc.); if disabled, it instead proposes the manual entry of the code (which must be unambiguous, in any case).

6.6 CONFIGURATION OF THE BADGE READER

- Connect the badge reader to the PC / Touch Screen and power it.
- Select the **Function mode** item



- In the screen which opens, search for the **Badge communication:** item and click on “**Configure**”
- In the window which opens up, set the correct parameters which regard the port and the communication parameters. At the end clicks on **Ok**.

Weitruck

Badge communication configuration

Port: 1

Bits per second: 9600

Data bits: 8

Parity: None

Stop bits: 1

IP Address:

TCP Port: 0

Ok Cancel

- Next to the Weigh management item, choose **“Operator and badge”** from the flip down menu so that the selection of the elements from the database can take place either by means of an operator as well as by swiping through a badge; choose **“No operator with badge”** so that the selection takes place only by swiping through the badge.

Weitruck

Configuration

Language/keyboard Function mode Buttons Database Scales Print Groups/Users Look Input/output Demo

2nd weigh search: Vehicle plate

Reactivation: Zero weight

Tare: Enable

Zero: Enabled

Cancel after weigh: Company Material

Codes generation

Login: Keyboard

View users Logout password

Weigh management: **Operator and badge**

Time out (sec): 10

Badge communication: Configure

Badge: Configure

Card: Configure

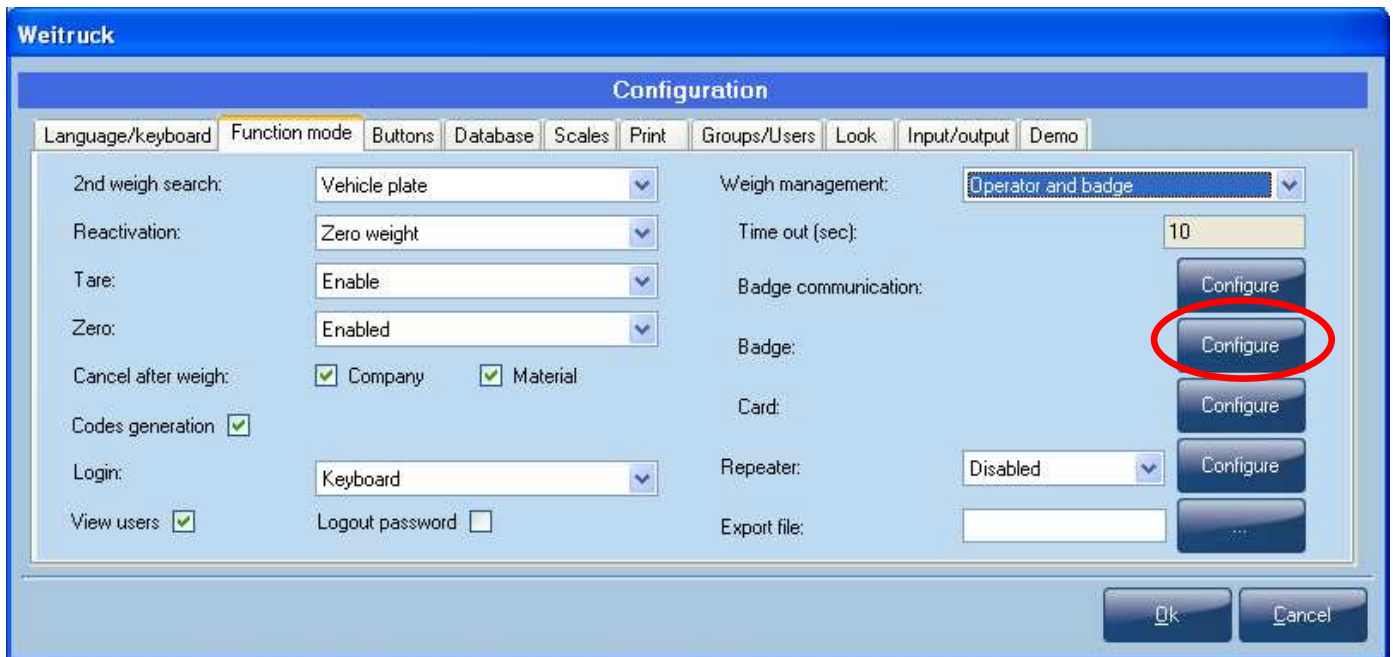
Repeater: Disabled

Export file: ...

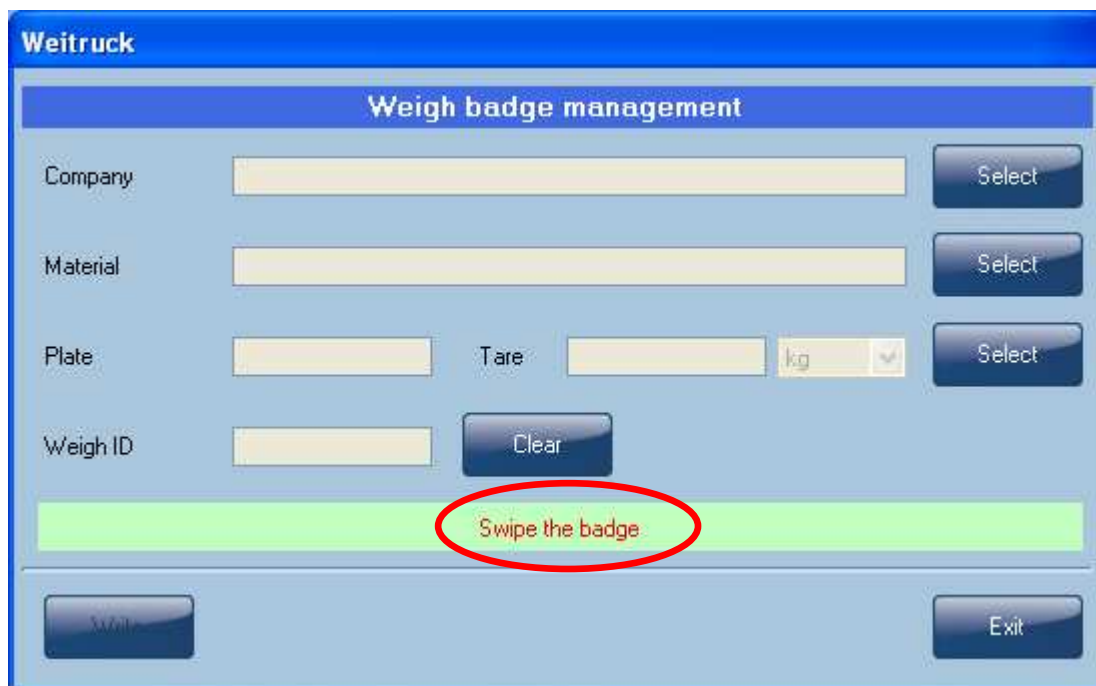
Ok Cancel

Note: in the “Without operator with badge” mode, it’s possible to set the time in which, if a weigh has not been made (in input, in output, a single weigh), the selection made with the badge, is cancelled (**Time out(sec):** item).

- Search the “**Badge**” item and press the configure key



- In the new screen which appears, one is asked to swipe the badge: swipe the badge in the slot.

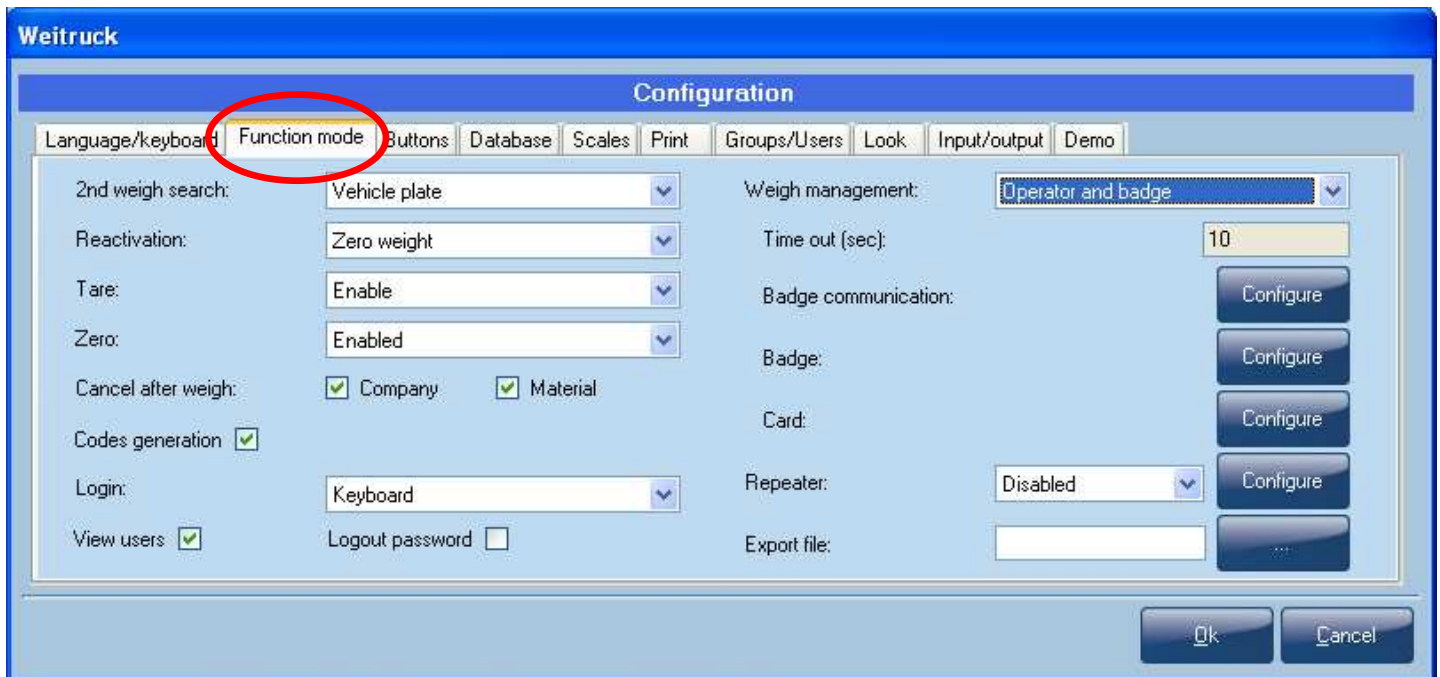


- The programme reads the badge number (the message **Read badge x** will be displayed). Click on the **Select** buttons and from the stored databases choose the company, material, and vehicle linked to that type of badge.
- At the end, click on **Write**. From now on each swiping of the badge corresponds to the automatic selection of the company, material, and vehicle as configured here.

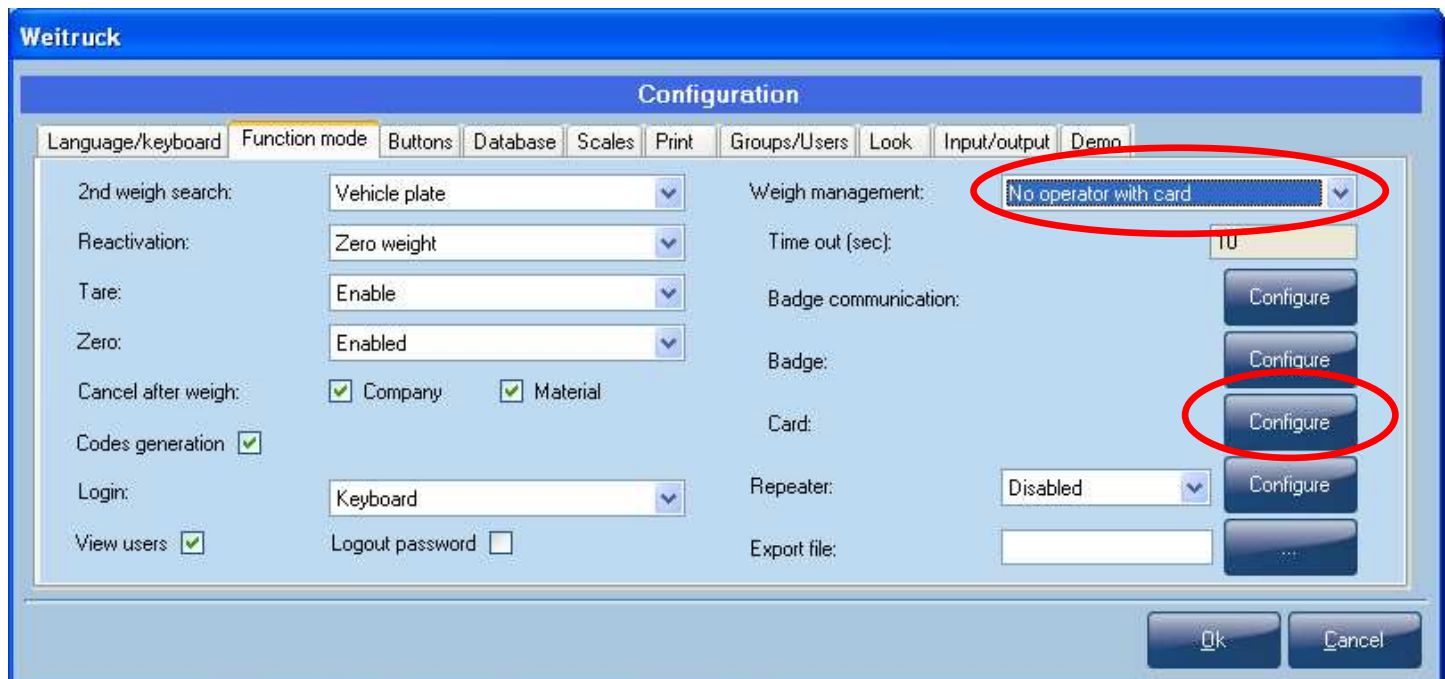
Note: with this procedure the data is saved on the WEITRUCK. It's possible to store the same information on the chip card (see section 6.7)

6.7 CONFIGURATION OF THE CHIP CARD READER

- Connect the chip card reader to the PC/Touch Screen and power it
- Select the **Function mode** item



- Next to the Weigh management screen, choose the **“Operator and card”** menu because the selection of the elements from the database can take place both through an operator as well as through the entry of the chip card; choose **“Operator with card”** because the selection can take place only through the entry.



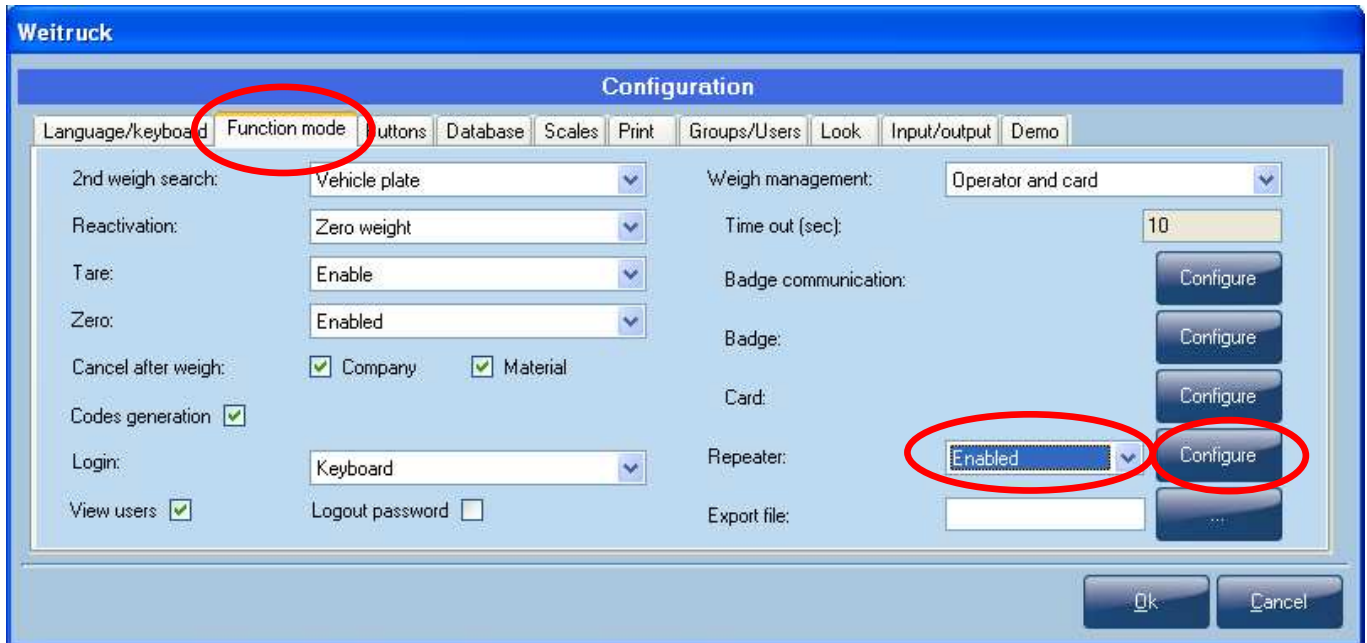
- Search the **“Card”** item and press the configure key
- The configuration is the same as for the badge reader (section 6.6). The only difference is that in this case the data is stored in the chip card.

6.7.1 FUNCTIONING MODE WITH THE CHIP CARD

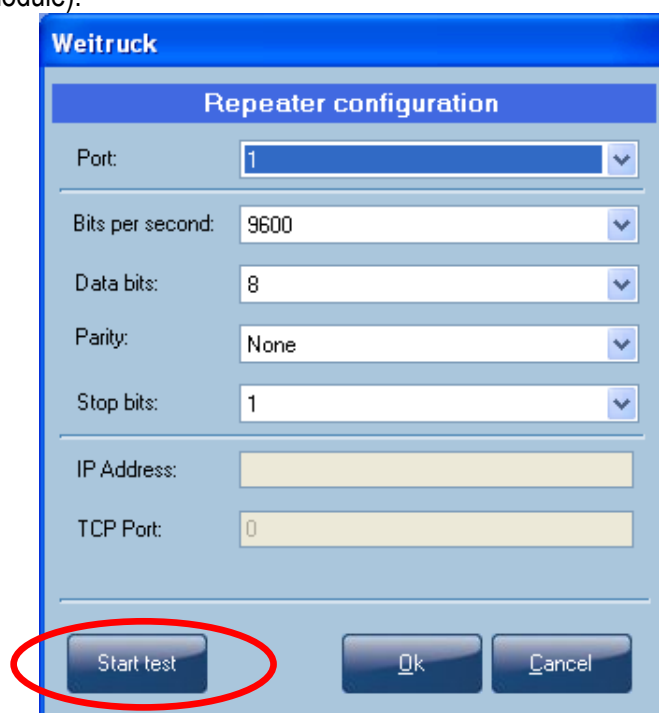
- Make sure that one has passed from the enabling condition before executing the new weigh
- Insert the chip card: the linked data will be selected
- Carry out the weigh in INPUT, in OUTPUT, or as a SINGLE WEIGH

6.8 REPEATER CONFIGURATION

- Select the **Function mode** item
- Enable the repeater from the flip down menu
- Press on the **Configure** button next to the **Repeater** field.



- In the window which opens, set the correct parameters which regard the port and the communication parameters. By pressing on the **Start test** button, the communication can take place: the indicator will display a sequence of numbers up until one selects the **End test** button (this procedure may be relatively long if the port is the one connected to a radio module).

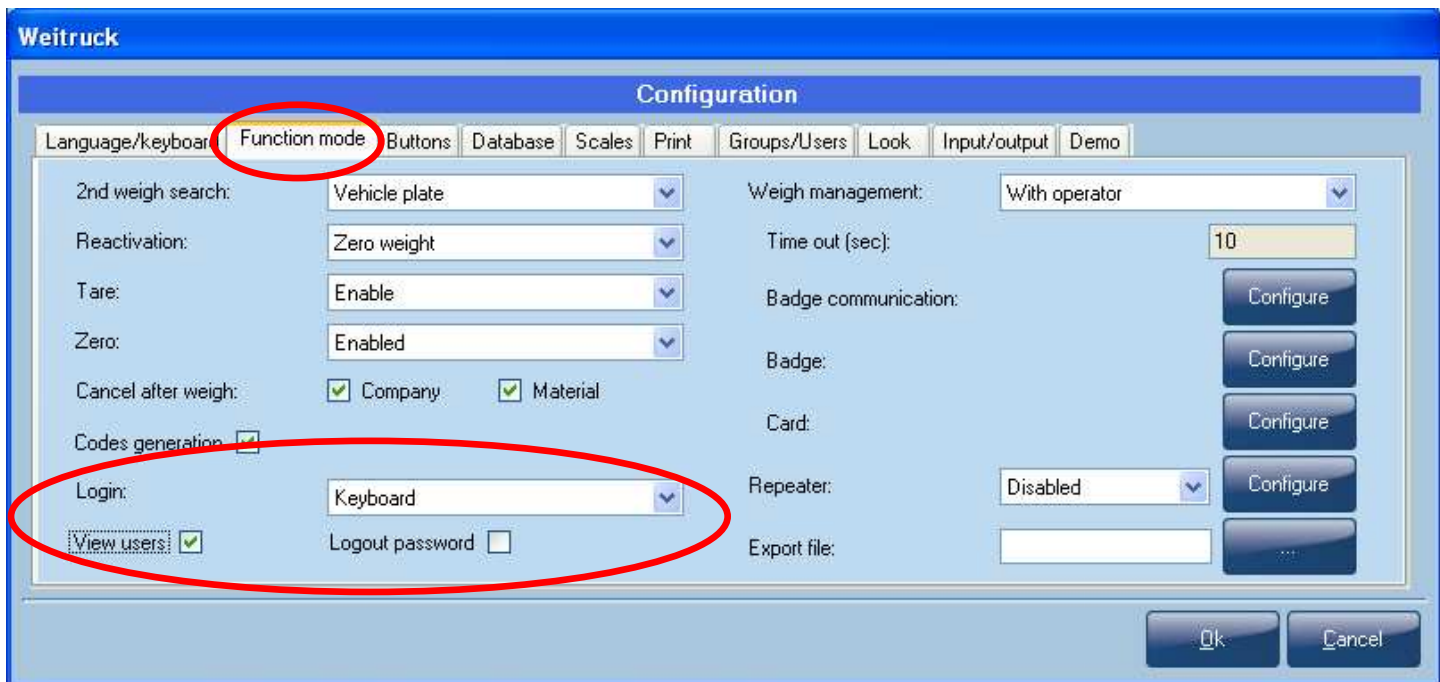


At the end of all these configurations, press **Ok**.

6.9 CONFIGURATION OF LOGIN/LOGOUT PARAMETERS

To configure the login and logout parameters, one should enter the following

- Select the **Function mode** item



Login: allows to select the mode in which one accesses the application (*Keypad, Smart card, Badge*). To configure the Smart card or the Badge, go to sections 6.6 and 6.7.

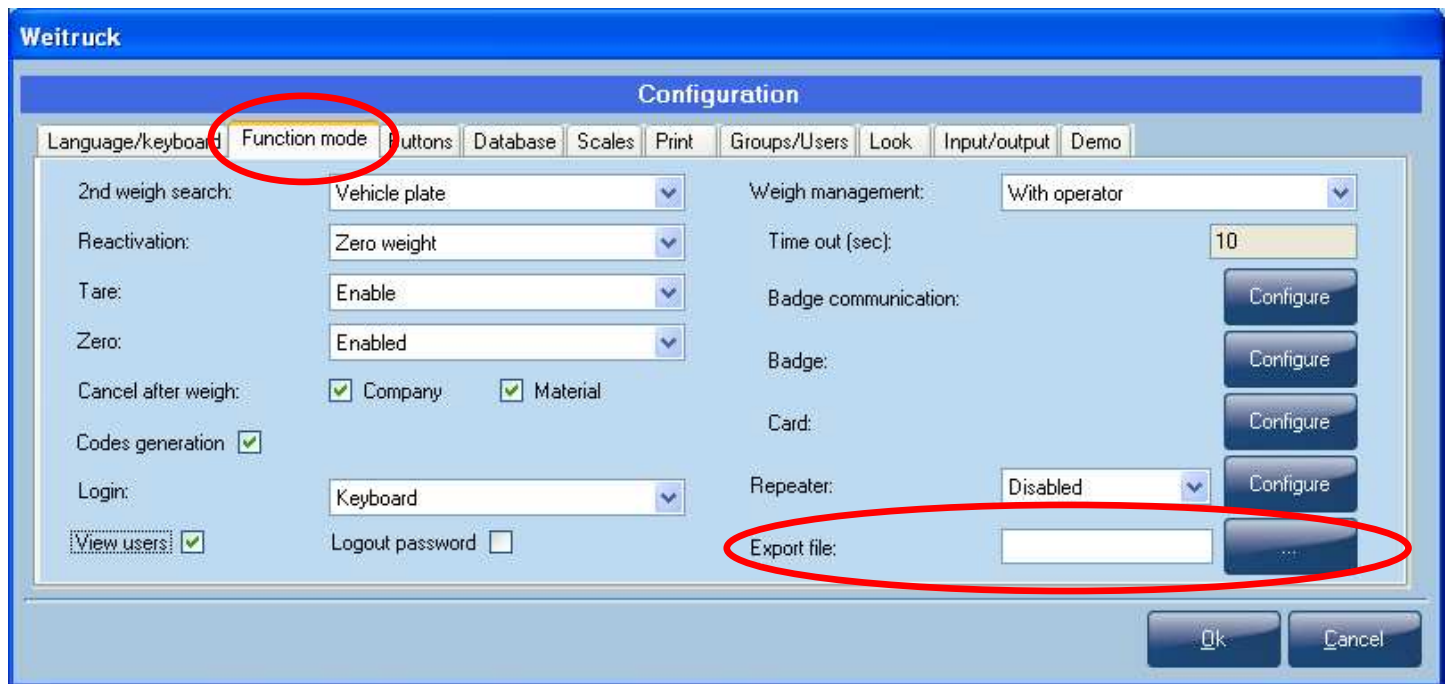
View users: if enabled, in the access screen to the programme it's possible to use a flip down menu in which under the "Name:" it's possible to select one of the configured users from the list.

Logout password: if enabled, when exiting the programme one is asked to enter the password linked to the current user (only with login from the keypad).

6.10 EXPORTING OF WEIGHS

It's possible to export all the weighs and linked data into an Excel file

- Select the **Function mode** item

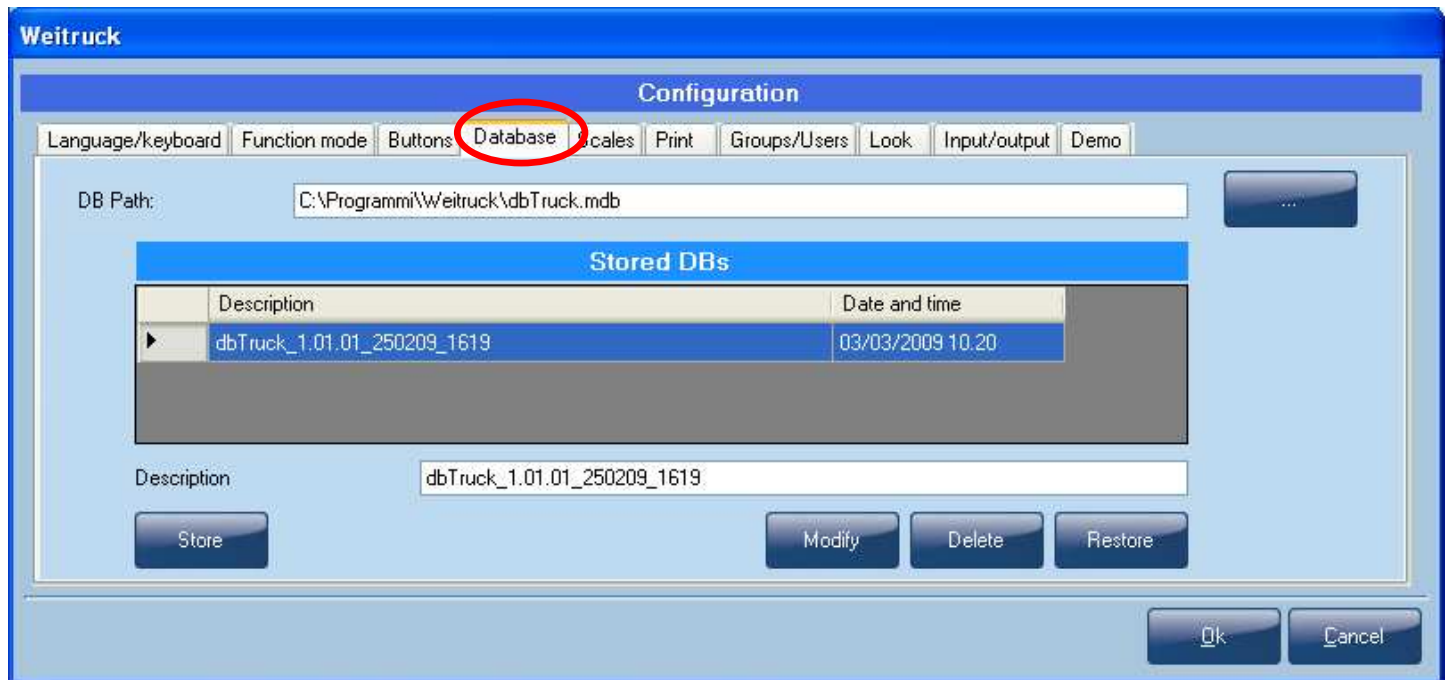


- Under the **Exporting file** item, press on the “...” key, and select the folder in which one saves the exporting file

Note: the exporting is updated each time that one carries out a weigh.

6.11 DATABASE STORAGE

- Select the **Database** item



In this screen it's possible to store the whole WEITRUCK database

- Enter the name to assign to the database in the **Description** window
- Press the **Store** key in order to store the WEITRUCK database

To modify the name of an already stored database:

6.11.1 DATABASE MODIFICATION

To modify the name of a database:

- Select the database which one wants to modify
- Write the new database name in the description window
- Press the **Modify** key in order to modify the name of the selected database

6.11.2 DATABASE CANCELLATION

To cancel a database:

- Select the database which one wants to cancel
- Press the **Cancel** key to cancel the selected database

6.11.3 DATABASE RESTORING

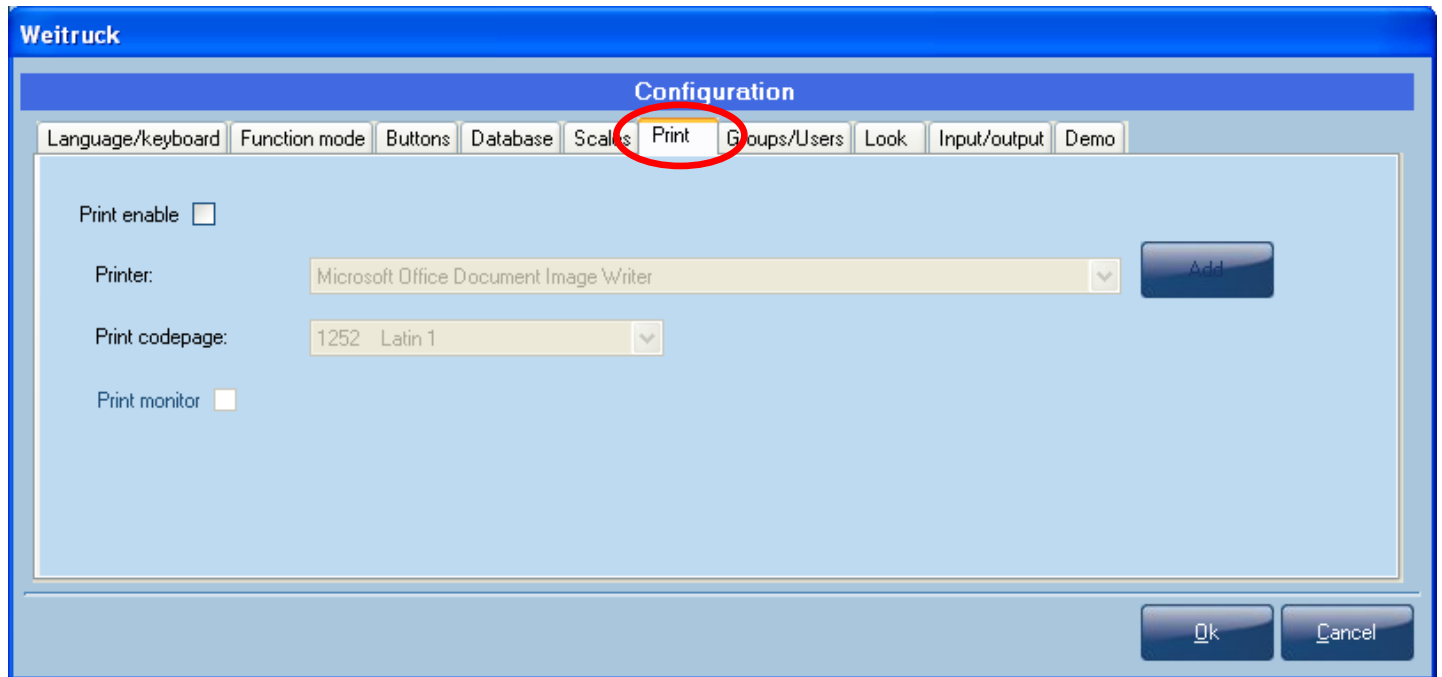
To restore a database:

- Select the database which one wants to restore
- Press the **Restore** key to restore the selected database

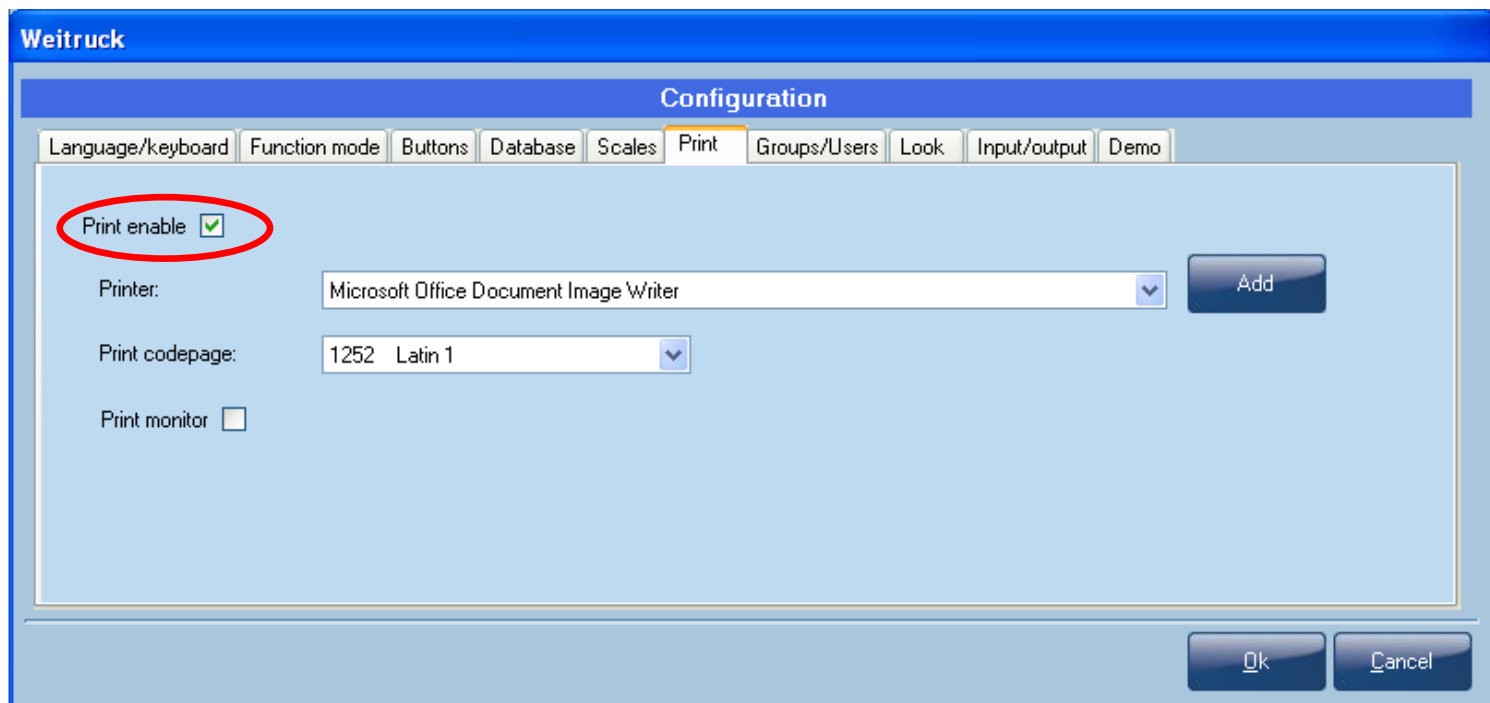
By restoring the database the application also has to be restarted.

6.12 PRINTER CONFIGURATION

- Select the **Print** item



- Select the **“Print enabled”** item in order to enable the printer (its enabling will cause the restart of the application)
- Once enabled, it’s possible to select the printer which one wants to use by choosing the **“Printer”** item from the dropdown menu.
- To change the printer codepage, select the the style from the dropdown menu under the **Print Codepage** item




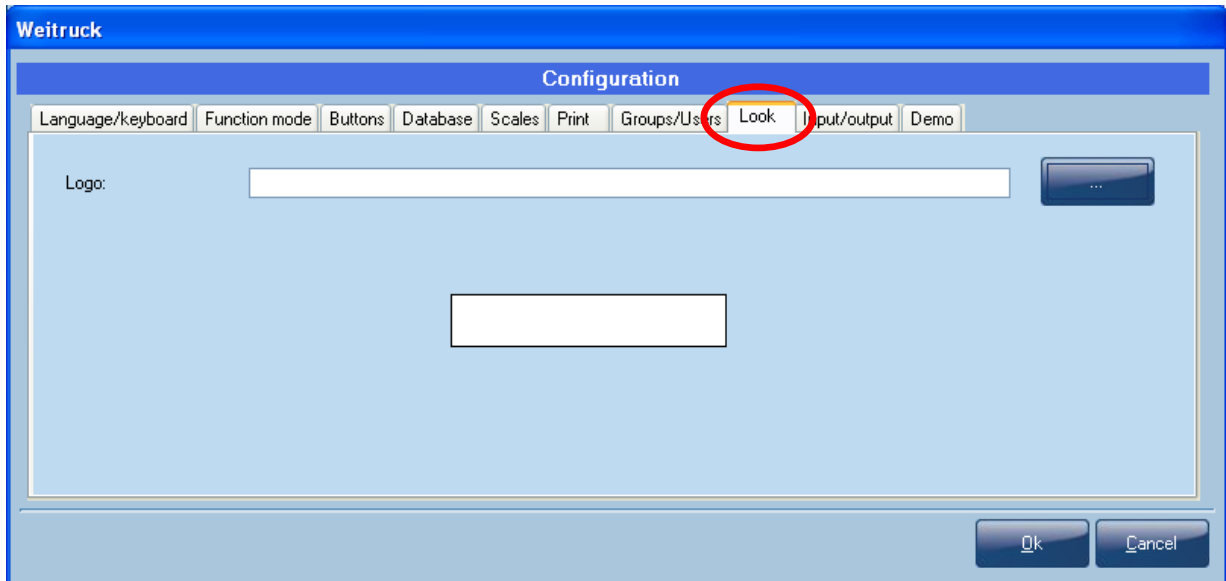
Note: if the printer which one wants to use is not installed in the pc/Touch screen, click on the **Add** key and follow the suggested options for installing it. For further details refer to the printer manual

Print Monitor: Eventual print errors are shown with a message on the monitor. Its activation involves the restart of the application.

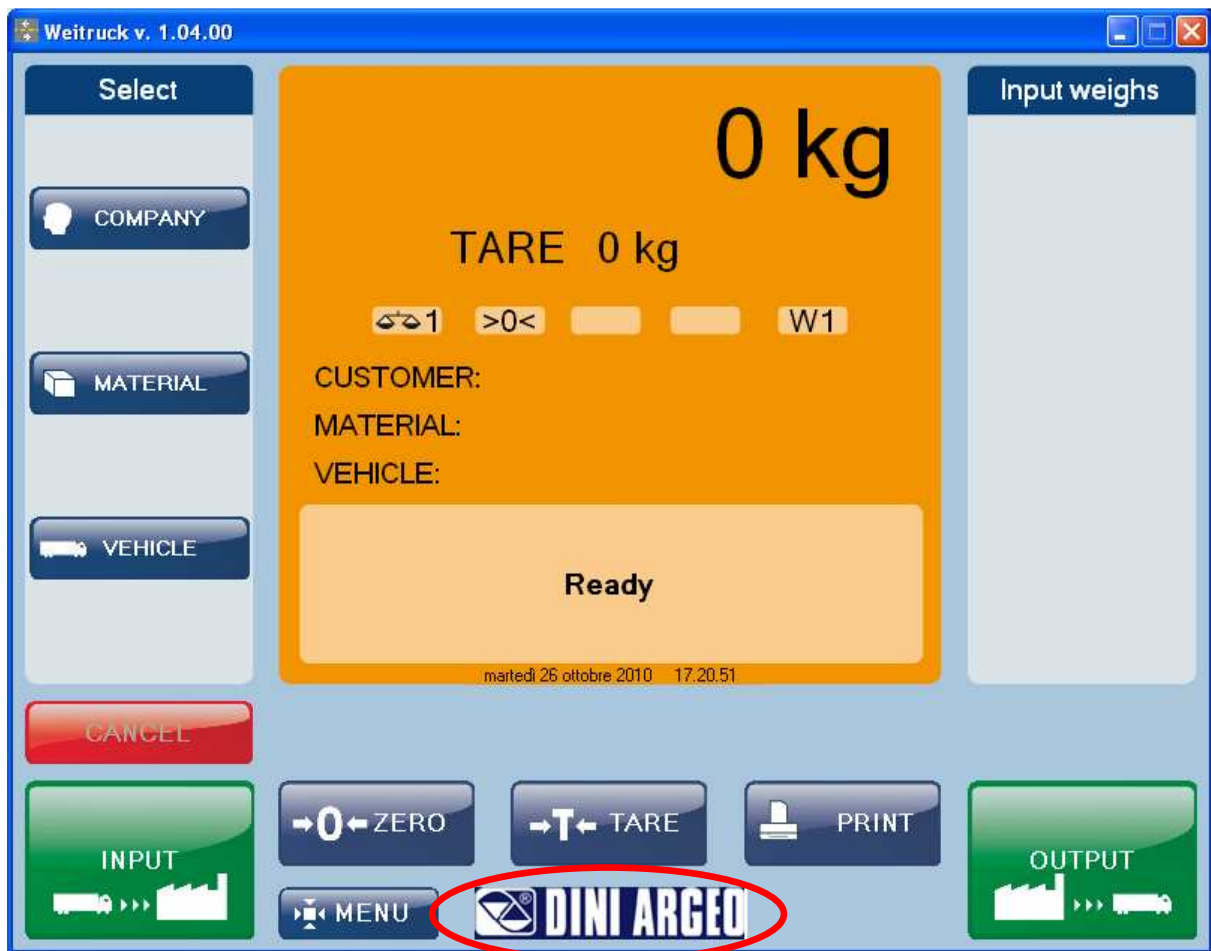
6.13 LOGO CONFIGURATION

By selecting the **Look** item it's possible to select a logo that will be shown in the main screen:

- Select the **Look** item and click on  to select the logo.



- Then, the logo will be shown in the main screen:



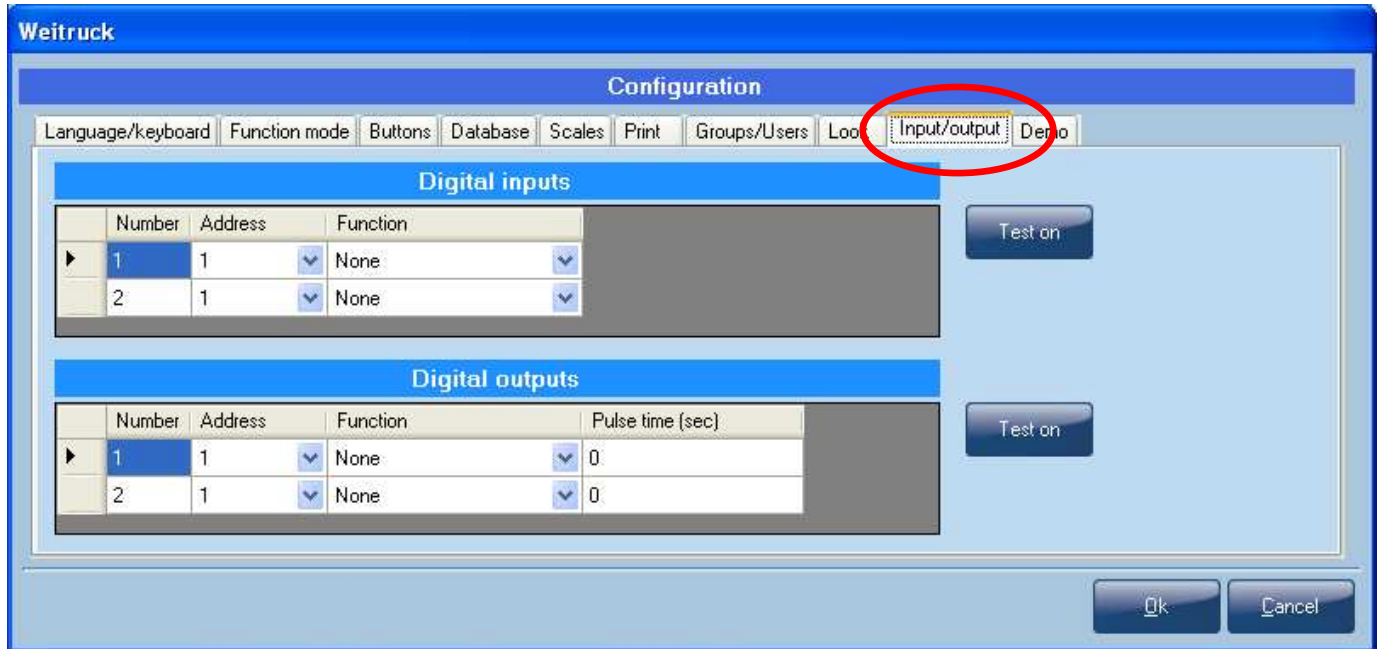
Max dimensions: 182x35 pixels
Format: BITMAP, JPEG

6.14 INPUT/OUTPUT CONFIGURATION

(Available for DGT series indicators)

It's possible to use the inputs and outputs of the indicator in using with the Weitruck by associate to itself a specific function.

- Press on **MENU >> Configuration** from the main window
- Select the **Inputs/Outputs** item



6.14.1 INPUTS CONFIGURATION

Under the **Digital inputs** item there is a table used for configuring of the inputs:

Digital inputs			
Number	Address	Function	
1	1	None	
2	1	None	

Test on

Number: indicates the input number (input 1, 2)

Address: indicates the 485 address of the indicator that one want to use connected

Function: indicates the function to associate at the input 1/2

Under this item, there are 2 selectable functions:

- **Enable show weight** : if the associated input is active, it enables the view of the weight
if the associated input is not active, it disables the view of the weight
- **Enable weigh**: if the associated input is active, it enables the view of the all keys in weighing mode
if the associated input is not active, it disables the view of the all keys in weighing mode

Through the **Test on** key is possible to check the correct functioning of the inputs.

Then, will appear another item **Status** that indicates if the input 1/2 (active) works correctly.

To interrupt the test, press on **Test off** key

Digital inputs				
Number	Address	Function	Status	
1	1	Enable show weight	<input checked="" type="checkbox"/>	Test off
2	1	Enable weigh	<input type="checkbox"/>	

6.14.2 OUTPUTS CONFIGURATION

Under the **Digital outputs** item there is a table used for configuring of the outputs:

Digital outputs				
Number	Address	Function	Pulse time (sec)	
1	1	None	0	Test on
2	1	None	0	

Number: indicates the output number (1, 2)

Address: indicates the 485 address of the indicator that one want to use connected to the Weitruck

Function: indicates the function to associate at the output 1/2

Under this item, there are 2 selectable functions:

- **Weigh terminated** : The associated output is activated when the weigh is terminated
- **Weigh cancelled**: The associated output is activated when the weigh is cancelled (**CANCEL** key)

Pulse time (sec): indicates the pulse time (in seconds)

Through the **Test on** key is possible to check the correct functioning of the outputs.

Then, will appear another item **Status**: select the output flag that one wants to check and it will be enabled.

To interrupt the test, press on **Test off** key

Digital outputs				
Number	Address	Function	Pulse time (sec)	Status
1	1	Weigh terminated	0	<input checked="" type="checkbox"/>
2	1	Weigh cancelled	0	<input type="checkbox"/>

Test off